

INSTRUCTION MANUAL

INDUSTRIAL BLENDER - TI8AL-160001 A8

IMPORTANT SAFEGUARDS

When using electrical appliances, basics safety precautions should always be observed including the following:

- Before connecting your blender check if voltage of your power system corresponds to the same specified on the appliance.
- To protect against risk of electrical shock, do not put cord, plug, base or motor in water or other liquids.
- Never connect two or more appliances in the same plug.
- When not in use, unplug the blender.
- Avoid starting blender
- Avoid contact with moving parts because blades are sharp. "Handle carefully".
- Keep hands and utensils out of container while blending to prevent the possibility of severe personal injury and or damage to blender. A plastic spatula may be used but must be used only when blender is "NOT RUNNING".
- Only remove the container when blender "COMPLETELY STOPPED".

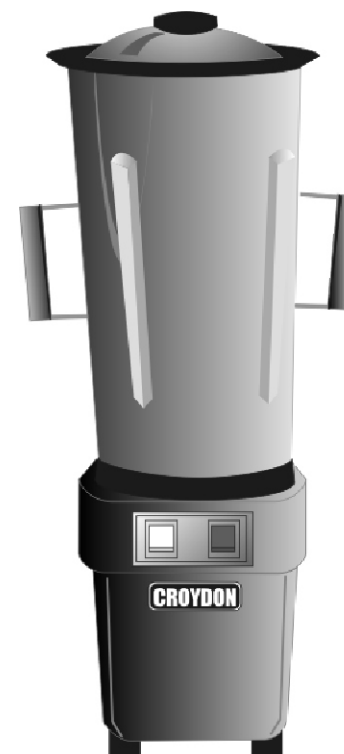
INSTRUCTIONS FOR USE

- Blender control is made by two buttons: * White button (on/off)
* Red button (pulse)
- It is recommended to cut food in small pieces and maintain food below frieze height to avoid spilling.
- To start blender, place small quantity of food before connecting it, and afterwards complete container placing food thru service lid.
- For mixed dry ingredient use the pulse button first.
- When blender is running do not remove the lid.
- If blender is running do not remove the lid.
- If blender action stops, turn blender off. Remove lid and use a plastic spatula to push mixture toward blades. Replace lid and continue.

CLEANING PROCEDURE

- Clean container (cup) with liquid soap and water filling to half capacity.
- Turn on blender for some seconds.
- Turn off blender, empty the container and rinse it.
- Unplug blender clean body and external cup with a wet cloth.
- Do not use harsh detergent or chemical products for cleaning.
- To disassemble see Fig1.

CROYDON



TI8AL

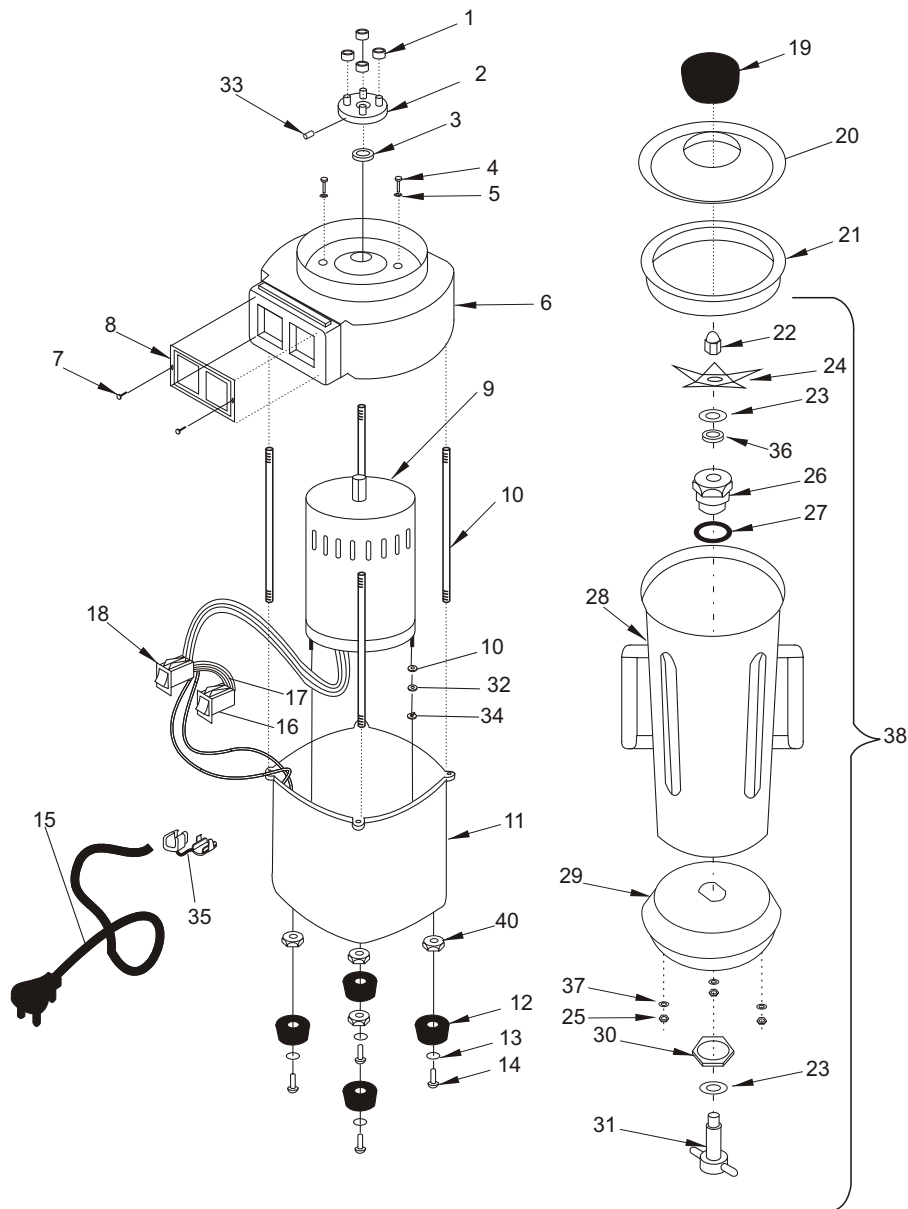


CROYDONMAQ INDUSTRIAL LTDA.

Estrada São Lourenço, 891 - Capivari - Duque de Caxias.
RJ - Brasil - CEP 25243-150 Fax: 55 21 2676-2522
Phone: 55 21 2776-1928 / 55 21 2676-1512
e-mail: croydon@croydon.com.br

TI8AL-160001 A8

CROYDON INDUSTRIAL BLENDER 8 LITERS



CROYDON

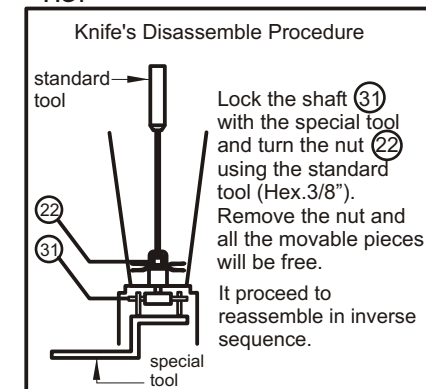
item number

1	37.023-3	Polyurethane Ring
2	37.044-3	Shaft Adapter
3	9.410-3	Retainer
4	343	(1/4) screw
5	589	Washer
6	37.043-3	Body Cover
7	552	(2,9) Screw
8	37.025-3	Switches' Plate
9	37.312-3	60 HZ Motor
10	641	Washer
11	37.042-3	Body
12	3.000-3	Rubber Foot
13	647	Washer
14	680	Rivet
15	14.033-3	Cord Connection
16	37.041-3	Switch (on/off)
17	37.091-3	Wire Connection
18	37.072-3	Switch (pulse)
19	37.031-3	Service Lid
20	37.111-3	Lid (8l)
21	37.103-3	Seal Lid (8l)
22	37.033-3	Knife's Nut
23	37.511-3	Friction's Washer
24	37.570-3	Knife
25	635	Nut
26	37.083-3	Bushings (chuck)
27	37.062-3	Rubber Ring
28	37.115-3	Pitcher (8l)
29	37.078-3	Container's Base
30	37.058-3	Chuck's Nut
31	37.079-3	Shaft
32	643	Washer
33	534	Screw
34	594	Washer
35	9.413-3	Cord Retainer
36	37.063-3	Retainer
37	642	Washer
38	37.578-3	Pitcher Assembly
39	37.243-3	Thread Bar
40	604	Nut

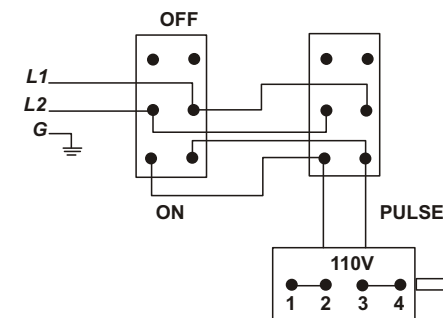
INDUSTRIAL BLENDER 8 LITERS.

description

FIG1



Wiring Diagram



Technical Data

TI8AL-160001 A8	
Voltage (V)	110
Power (HP)	1/2
Amperage (A)	7
Speed (rpm)	3465
Capacity (l)	8
Weight (Kg/lbs)	17/37.4
Dimension WxHxD (cm/in)	32/12.6 x 73/28.8 x 24/9.5