

INSTRUCTION MANUAL

INDUSTRIAL BLENDER - TI15-160001-W6

* Please read these instructions carefully before operation this appliance.

IMPORTANT SAFEGUARDS

- When using electrical appliances, basic safety precautions should always be observed including the following:
- Before connecting your blender check if voltage of your power system corresponds to the same specified on the appliance.
- To protect against risk of electrical shock, do not put cord, plug, base or motor in water or other liquids.
- Never connect two or more appliances in the same plug.
- When not in use, unplug the blender.
- Avoid starting blender empty.
- Avoid contact with moving parts because blades are sharp. "Handle carefully".
- Keep hands and utensils out of container while blending to prevent the possibility of severe personal injury and or damage to blender. A plastic spatula may be used but must be used only when blender is "NOT RUNNING".
- Only remove the container when blender "COMPLETELY STOPPED".

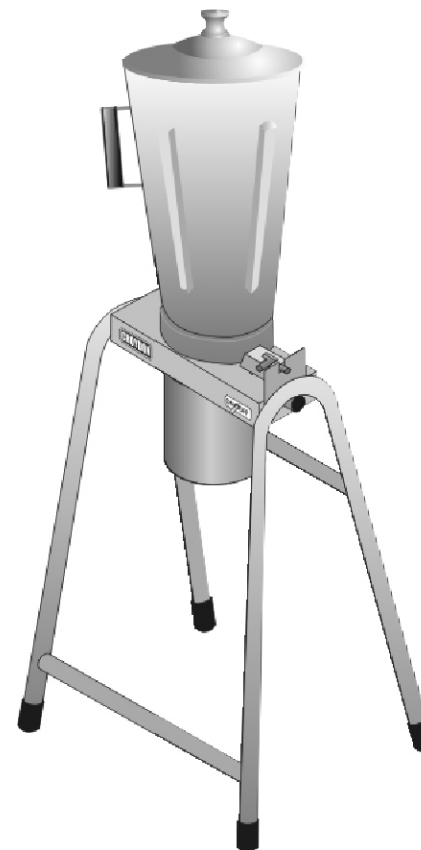
INSTRUCTIONS FOR USE

- Blender control is made by switch (ON - OFF).
- It's recommend to cut food in small pieces and maintain food below container's frieze height avoid spilling.
- Place a small quantity os food with blender off. Turn on blender and add the rest of food that you want to process.
- When blender is running do not remove the lid.
- If blender action stops, turn blender off. Remove lid and use a plastic spatula to push mixture toward blades. Replace lid and continue.

CLEANING PROCEDURE

- Clean container (cup) with liquid soap and water filling to half capacity.
- Turn on blender for some seconds.
- Turn off blender, empty the container and rinse it.
- Unplug blender clean body and external cup with a wet cloth.
- Do not use harsh detergent or chemical products for cleaning.
- Never use water jet or immerse appliance in water.
- Wipe off appliance with a dry cloth and wait at least half an hour before re-connecting to the main power outlet.
- If it's necessary to disassemble the knife and the bushing follow the instructions of the fig. 1.

CROYDON



TI15

CROYDON

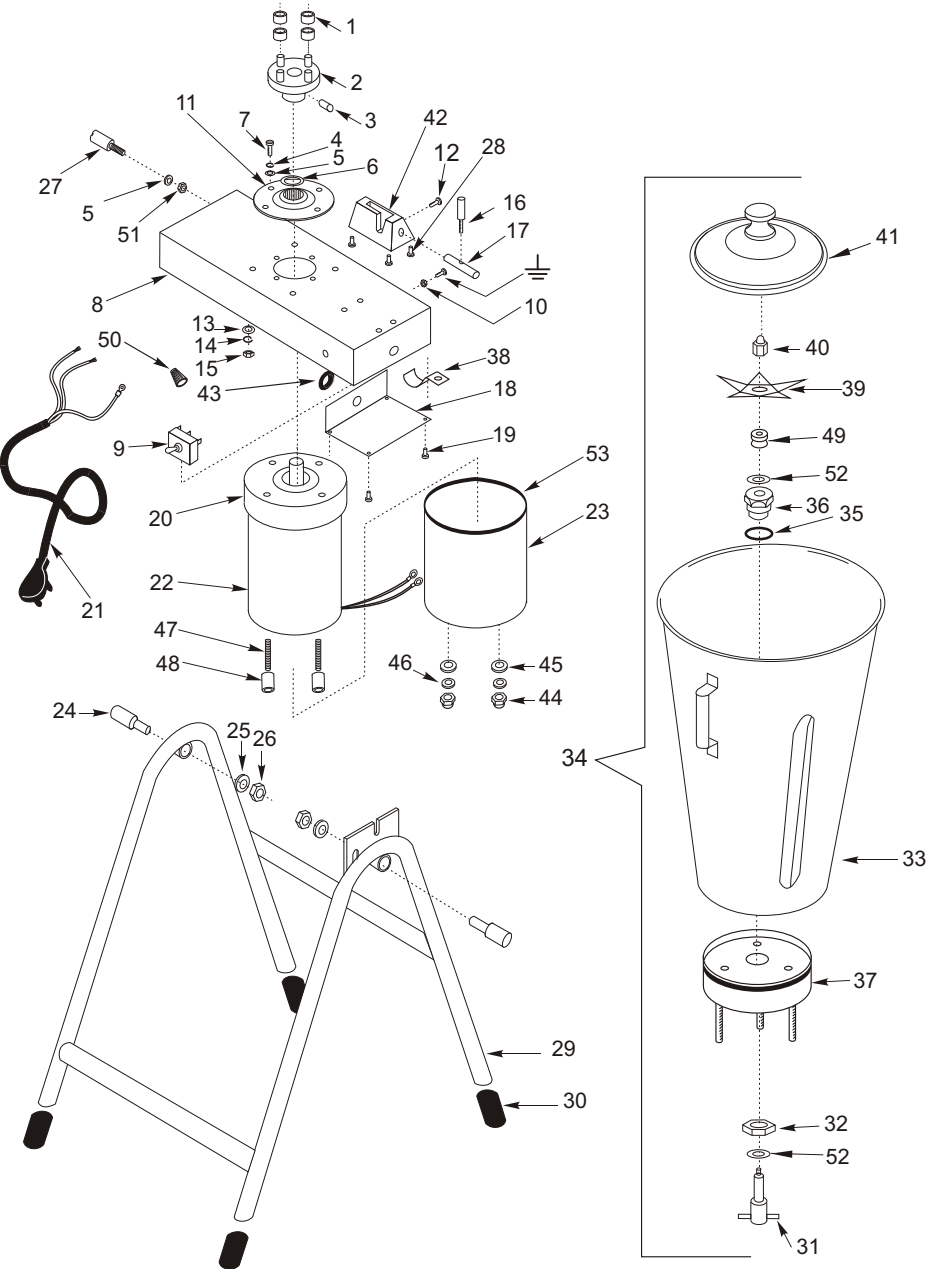
CROYDONMAQ INDUSTRIAL LTDA.

Estrada São Lourenço, 891 - Capivari - Duque de Caxias.
RJ - Brasil - CEP 25243-150 Fax: 55 21 2676-2522
Phone: 55 21 2776-1928 / 55 21 2676-1512
e-mail: croydon@croydon.com.br

TI15-160001-W6

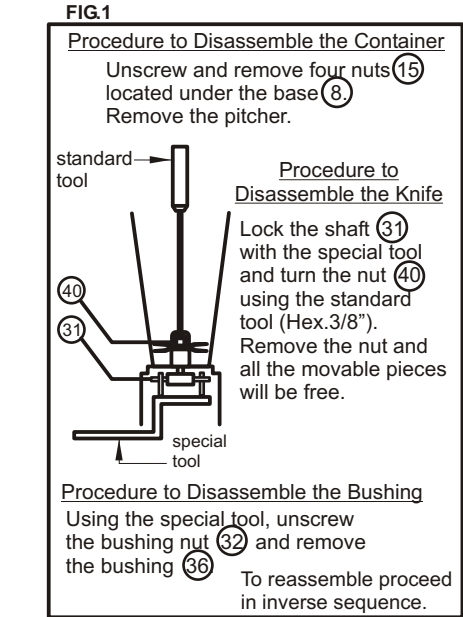


INDUSTRIAL BLENDER 15 LITERS (TI 15)

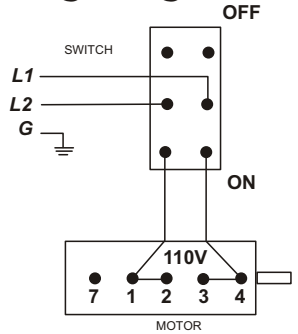


INDUSTRIAL BLENDER 15 LITERS (TI 15)

item	code	description
1	37.023-3	Polyurethane Ring
2	37.261-3	Shaft Adapter
3	534	Allen Screw 1/4"
4	598	Press Washer
5	641	Washer
6	9.410-3	Retainer
7	361	Screw 5/16"
8	37.229-3	Base
9	269	Switch (On/Off)
10	604	Nut 3/16"
11	37.232-3	Container's Support
12	385	Screw 3/16"
13	642	Washer
14	597	Press Washer
15	601	Nut 1/4"
16	37.919-3	Latch Pin
17	37.920-3	Latch Body
18	37.240-3	Switch Cover
19	552	Screw
20	37.211-3	Motor Top Cover
21	2.082-3	Cord Connection
22	37.226-3	Motor
23	37.231-3	Motor Cover
24	37.206-3	Special Screw
25	592	Press Washer
26	607	Nut 1/2"
27	37.235-3	Rabbit
28	332	Screw 1/4"
29	37.901-3	Blender Support
30	37.015-3	Foot
31	37.079-3	Shaft
32	37.058-3	Chuck Nut
33	37.258-3	Container
34	37.580-3	Container Assembly
35	37.062-3	O'ring
36	37.083-3	Bushing (Chuck)
37	37.256-3	Base
38	37.210-3	Bracket
39	37.570-3	Knife
40	37.033-3	Nut
41	37.019-3	Lid
42	37.234-3	Latch Support
43	2.007-3	Rubber Ring
44	623	Nut
45	643	Washer
46	594	Press Washer
47	37.241-3	Special Screw
48	37.239-3	Gap Base
49	37.063-3	Retainer
50	9.413-3	Strain Relief
51	610	Nut 5/16"
52	37.511-3	Underfriction Washer
53	37.212-3	Finishing



Wiring Diagram



Technical Data

TI15-160001-W6	
Voltage (V)	110 (60 Hz)
Power (HP)	1 1/2
Amperage (A)	18.0
Speed (rpm)	3430
Capacity (l)	15
Weight (Kg/lbs)	24.8/52.8
Dimension W x H x D (cm/in)	46/18.2 x 133/52.4 x 57/22.5