

# INSTRUCTION MANUAL

## INDUSTRIAL BLENDER - TI4AL-250001 A6

### IMPORTANT SAFEGUARDS

When using electrical appliances, basic safety precautions should always be observed including the following:

- Before connecting your blender check if voltage of your power system corresponds to the same specified on the appliance.
- To protect against risk of electrical shock, do not put cord, plug, base or motor in water or other liquids.
- Never connect two or more appliances in the same plug.
- When not in use, unplug the blender.
- Avoid starting blender
- Avoid contact with moving parts because blades are sharp. "Handle carefully".
- Keep hands and utensils out of container while blending to prevent the possibility of severe personal injury and or damage to blender. A plastic spatula may be used but must be used only when blender is "NOT RUNNING".
- Only remove the container when blender "COMPLETELY STOPPED".

### INSTRUCTIONS FOR USE

- Blender control is made by two buttons: \* White button (on/off)  
\* Red button (pulse)
- It is recommended to cut food in small pieces and maintain food below freeze height to avoid spilling.
- To start blender place small quantity of food before connecting it, and afterwards complete container placing food through service lid.
- For mixed dry ingredient use the pulse button first.
- When blender is running do not remove the lid.
- If blender action stops, turn blender off. Remove lid and use a plastic spatula to push mixture toward blades. Replace lid and continue.

### CLEANING PROCEDURE

- Clean container (cup) with liquid soap and water filling to half capacity.
- Turn on blender for some seconds.
- Turn off blender, empty the container and rinse it.
- Unplug blender clean body and external cup with a wet cloth.
- Do not use harsh detergent or chemical products for cleaning.
- To disassemble see Fig1

# CROYDON



# TI4AL

**CROYDON**

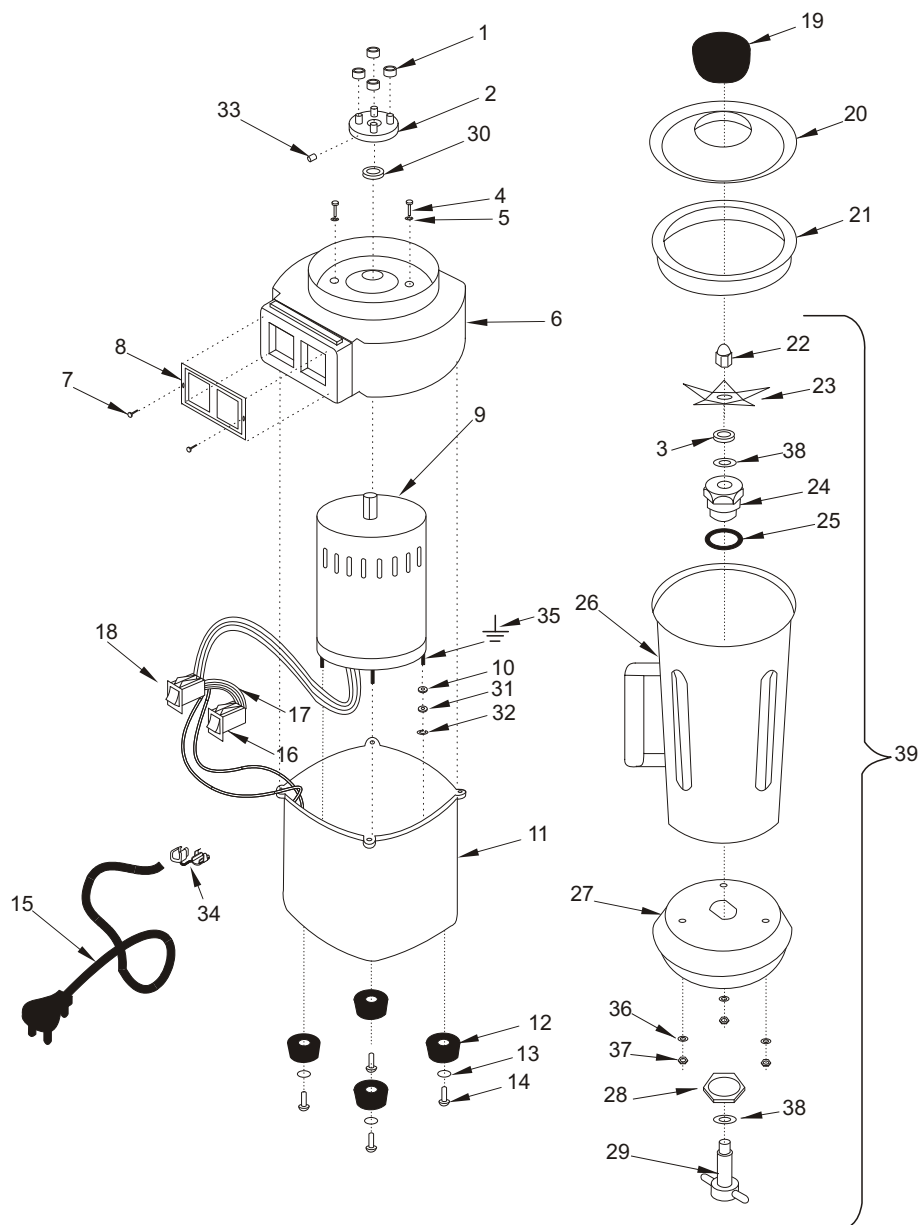
### CROYDONMAQ INDUSTRIAL LTDA.

Estrada São Lourenço, 891 - Capivari - Duque de Caxias.  
RJ - Brasil - CEP 25243-150 Fax: 55 21 2676-2522  
Phone: 55 21 2776-1928 / 55 21 2676-1512  
e-mail: croydon@croydon.com.br

TI4AL-250001 A6



## INDUSTRIAL BLENDER 4 LITERS

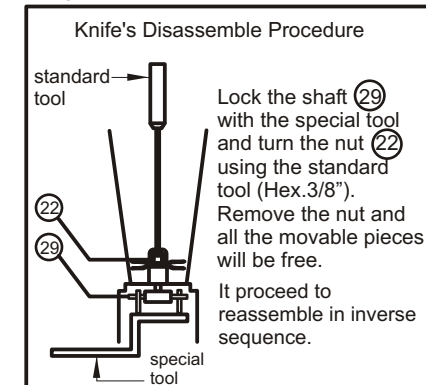


## INDUSTRIAL BLENDER 4 LITERS

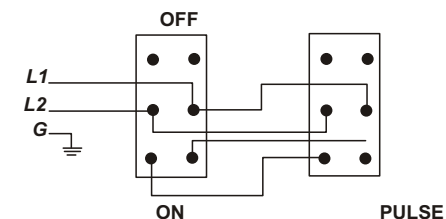
item	code	description
1	37.023-3	Polyurethane Ring
2	37.044-3	Shaft Adapter
3	37.063-3	Retainer
4	343	(1/4) Screw
5	589	Washer
6	37.043-3	Body Cover
7	552	Screw
8	37.025-3	Switches' Plate
9	37.310-3	50 HZ Motor
10	641	Washer
11	37.042-3	Body
12	3.000-3	Rubber Foot
13	647	Washer
14	680	Rivet
15	2.093-3	Cord Connection
16	37.041-3	Switch (on/off)
17	37.091-3	Wire Connection
18	37.072-3	Switch (pulse)
19	37.031-3	Service Lid
20	37.051-3	Lid (4l/6l)
21	37.707-3	Lid Seal (4l/6l)
22	37.033-3	Knife's Nut (Hex-3/8")
23	37.570-3	Knife
24	37.083-3	Bushings (Chuck)
25	37.062-3	Rubber Ring
26	37.052-3	Container (4l)
27	37.078-3	Container's Base
28	37.058-3	Chuck Nut
29	37.079-3	Shaft
30	9.410-3	Retainer
31	643	Washer
32	594	Washer
33	534	Screw
34	9.413-3	Cord Retainer
35	-----	Screw Ground
36	642	Washer
37	635	Nut
38	37.511-3	Underfriction Washer
39	37.574-3	Pitcher Assembly

### description

FIG1



### Wiring Diagram



### Technical Data

TI4AL-250001 A6	
Voltage (V)	220 (50Hz)
Power (HP)	1/2
Amperage (A)	7
Speed (rpm)	3465
Capacity (l)	4
Weight (Kg/lbs)	15/33
Dimension WxHxD (cm)	22x62x22